

Depth (m)

Lithology

FaultZone

Alteration

Oxidation

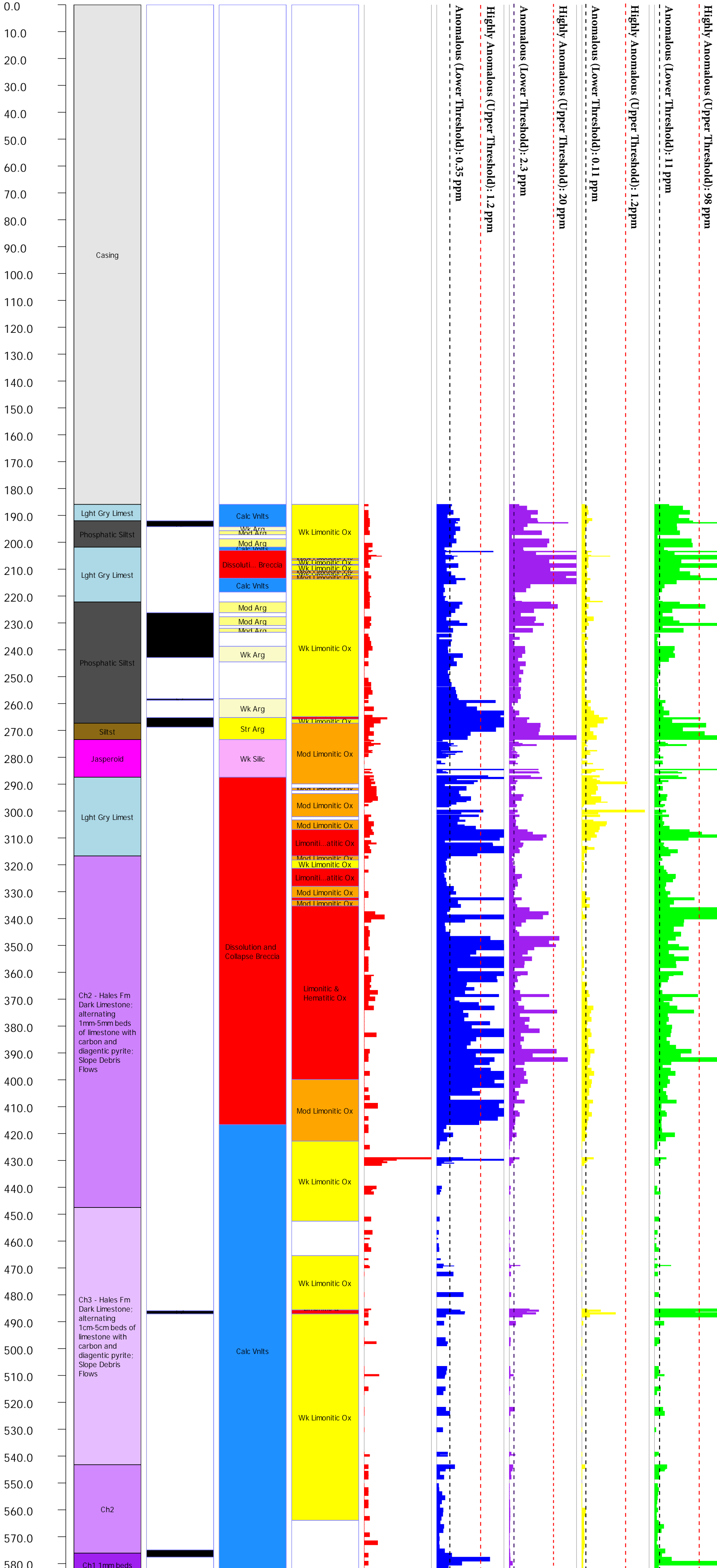
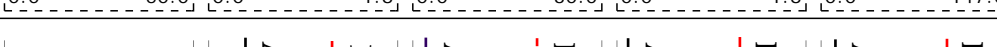
Au (ppb)

Tl (ppm)

Sb (ppm)

Hg (ppm)

As (ppm)





HOLE: SGVC002

186 metres (610 feet) ↓





HOLE: SGVC002

245 metres (803 feet) ↓













HOLE: SGVC002

411 metres (1,350 feet) ↓









HOLE: SGVC002

506 metres (1,661 feet) ↓



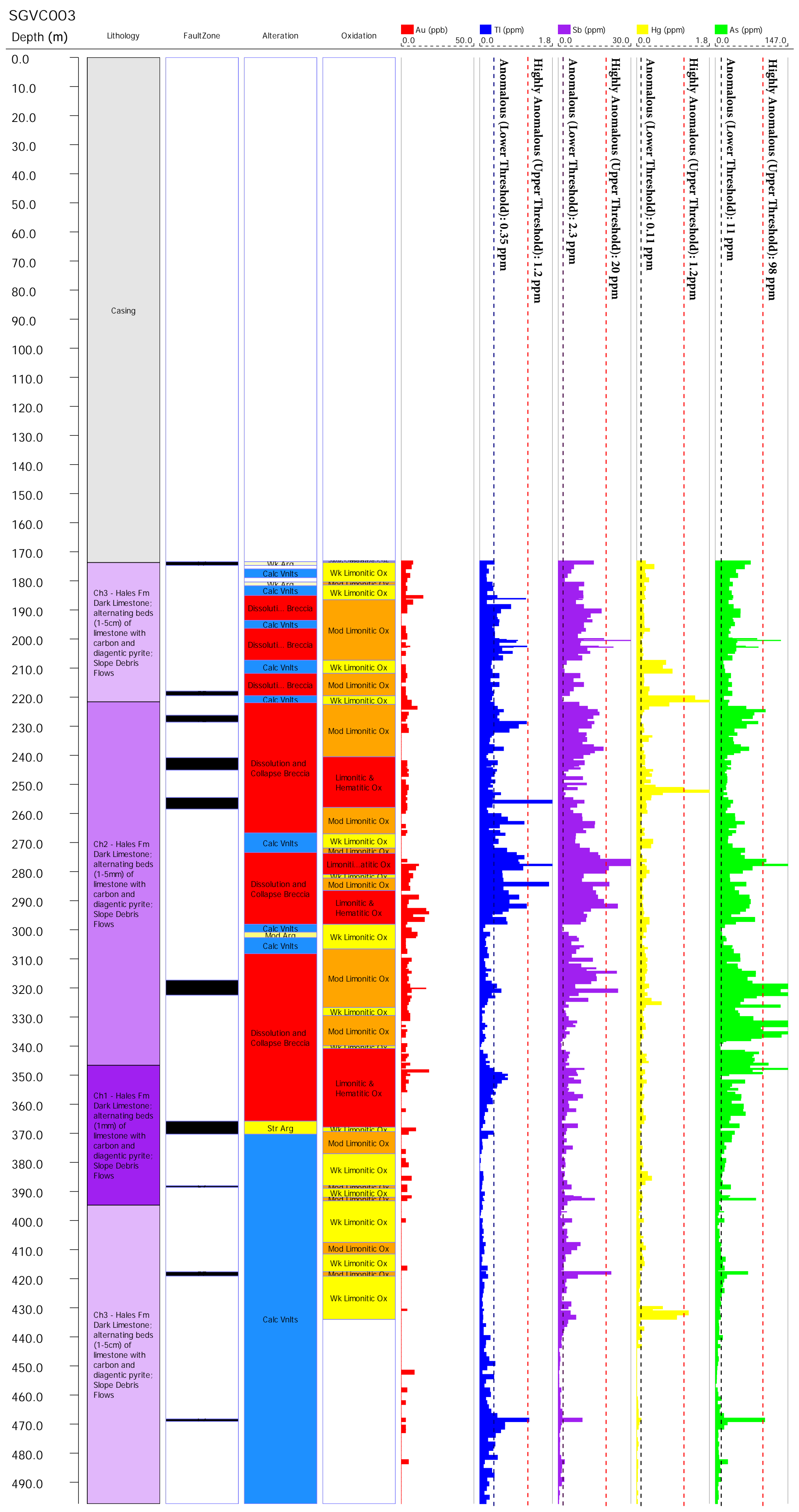


HOLE: SGVC002

552 metres (1,812 feet) ↓

















**HOLE: SGVC003**

279 metres (914 feet) ↓





HOLE: SGVC003

333 metres (1,094 feet) ↓





HOLE: SGVC003

386 metres (1,268 feet) ↓







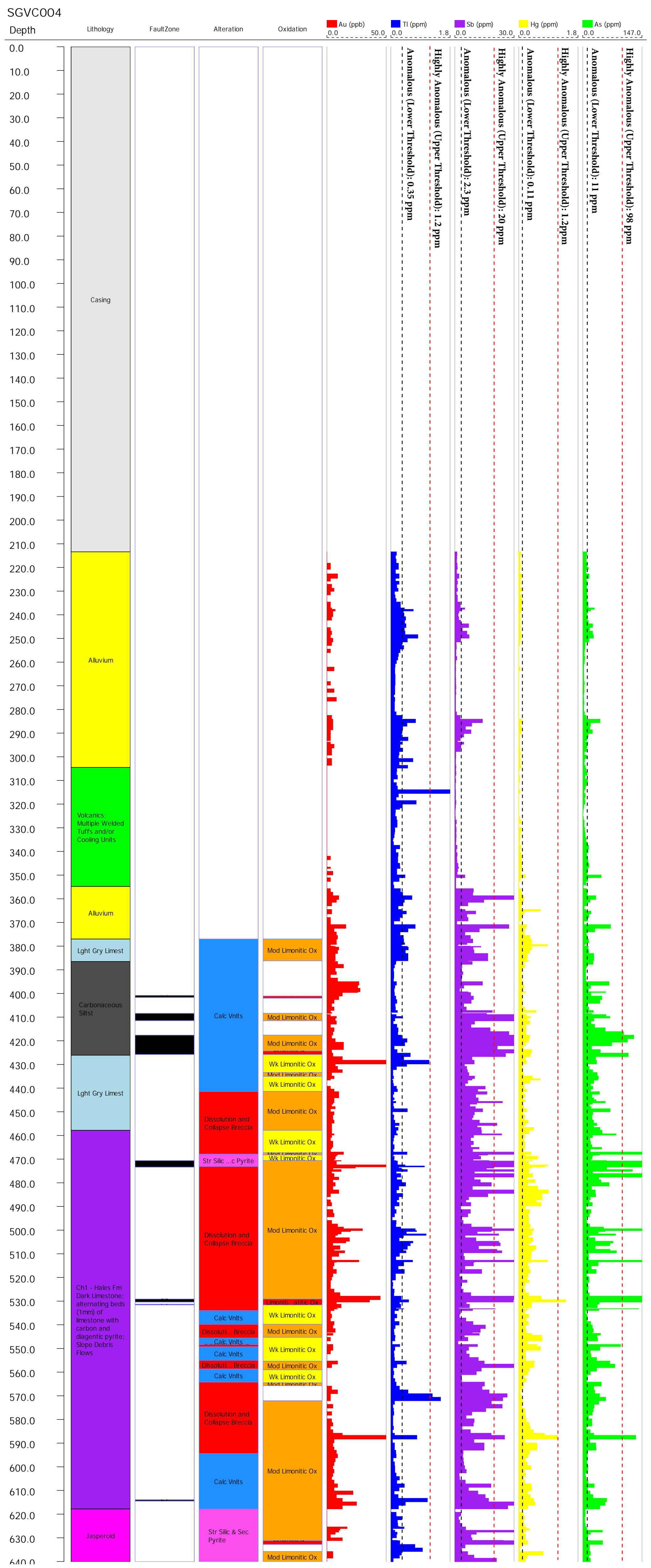


**HOLE: SGVC003**

483 metres (1,585 feet) ↓









HOLE: SGVC004

213 metres (700 feet) ↓









HOLE: SGVC004

317 metres (1,041 feet) ↓





HOLE: SGVC004

367 metres (1,204 feet) ↓





HOLE: SGVC004

419 metres (1,375 feet) ↓













HOLE: SGVC004

566 metres (1,857 feet) ↓



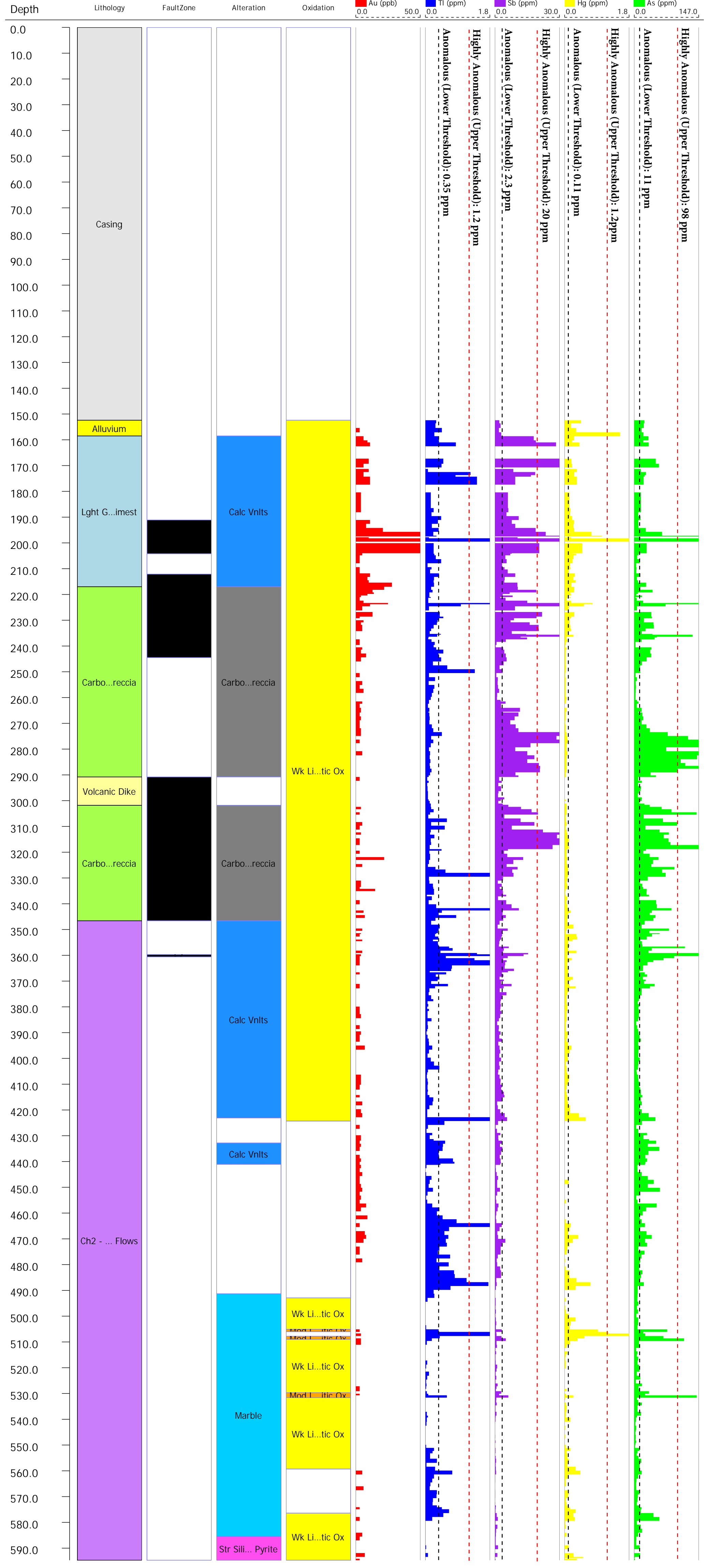


HOLE: SGVC004

614 metres (2,015 feet) ↓









HOLE: SGVC005

152 metres (500 feet) ↓





HOLE: SGVC005

241 metres (792 feet) ↓





HOLE: SGVC005

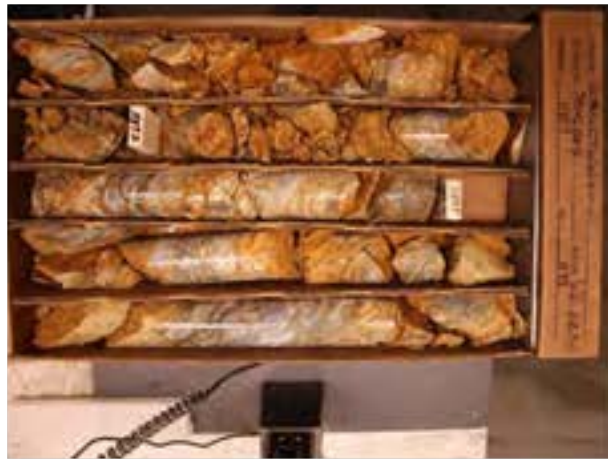
292 metres (958 feet) ↓





HOLE: SGVC005

343 metres (1,127 feet) ↓









HOLE: SGVC005

434 metres (1,426 feet) ↓









HOLE: SGVC005

530 metres (1,738 feet) ↓





HOLE: SGVC005

575 metres (1,887 feet) ↓

