

Kelly Creek Basin

EXPLORATION UPDATE

June 23, 2016

Reno Office

10 Greg Street, Suite 170
Sparks, Nevada 89431
775-359-7740

Vancouver Office

1500 – 885 West Georgia Street
Vancouver, B.C. V6C 3E8
604-601-2006

This Presentation contains certain "forward-looking statements" including, without limitation, expectations, beliefs, plans and objectives regarding the timing and nature of estimated future exploration, success of exploration activities, and potential transactions and ventures discussed in this Presentation. Among the important factors that could cause actual results to differ materially from those indicated by such forward-looking statements are the risks inherent in mineral exploration, the need to obtain additional financing, environmental permits, the availability of needed personnel and equipment for exploration and development, fluctuations in the price of minerals, and general economic conditions. Nevada Exploration Inc., its subsidiaries or affiliated companies, disclaims all responsibility and accepts no liability (including negligence) for the consequences of any person acting, or NOT acting, on this information. This presentation is neither an offer nor the solicitation of an offer to sell or purchase any investment.

The information contained in this presentation has been prepared by Nevada Exploration Inc. (the "Company"). The Company has prepared this presentation for the sole purpose of providing preliminary background, strategic, financial and other information to enable interested parties to review the business activities and objectives of the Company.

The information in this presentation, as well as any oral presentation and questions and answers, is subject to material updating, completion, revision, further verification and amendment without notice. This presentation is being furnished solely for the purpose of enabling prospective investors to determine whether they wish to proceed with further investigation of the Company.

INFORMATION REGARDING MINERAL PROPERTIES

Information in this presentation regarding the Company's mineral properties has been prepared under the supervision of Wade A. Hodges, the Company's 'qualified person' in accordance with National Instrument 43-101 ("NI 43-101"). Without limiting the foregoing, information concerning the Company's mineral properties has been prepared in accordance with the requirements of Canadian securities laws, which differ in material respects from the requirements of securities laws of the United States applicable to U.S. companies subject to the reporting and disclosure requirements of the United States Securities and Exchange Commission ("SEC").

INFORMATION REGARDING ADJACENT PROPERTIES

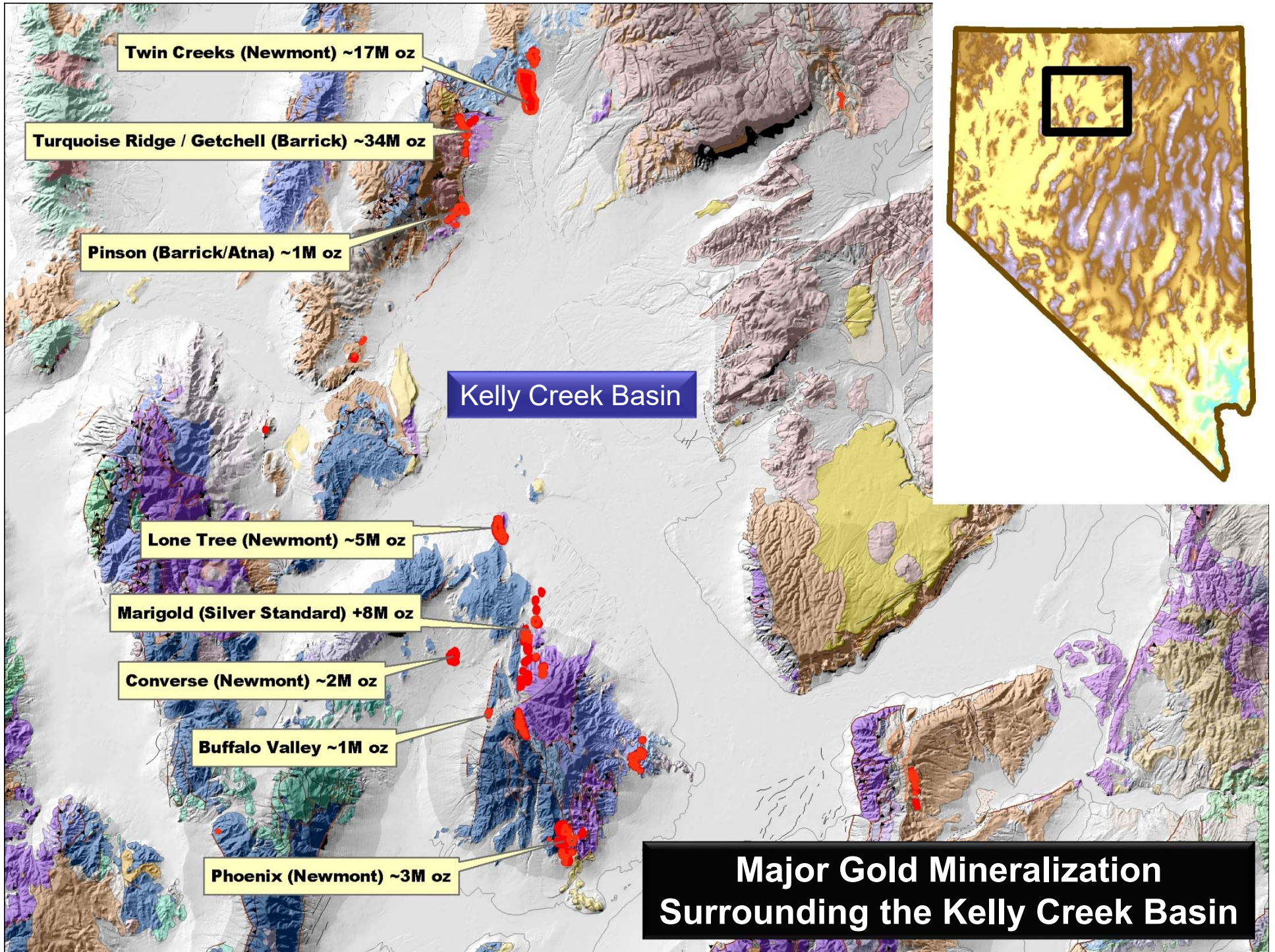
This presentation contains information about the Twin Creeks, Getchell, Pinson, Preble, Cortez Hills, Goldrush, Pipeline, and other gold mines or deposits in Nevada, which are 'Adjacent Properties' on which the Company has no right to explore or mine. All technical and other information regarding adjacent properties has been sourced from publically available sources and are believed by management of the Company to be reliable. Although management of the Company believes these sources to be reliable, the Company has not independently verified any of the data nor ascertained the underlying assumptions relied upon in such sources. Such data is subject to variations and cannot be verified due to limits on the availability and reliability of data inputs and other limitations and uncertainties inherent in any third party source. All of the adjacent properties presented herein have inherent risks that are uniquely associated with each property.

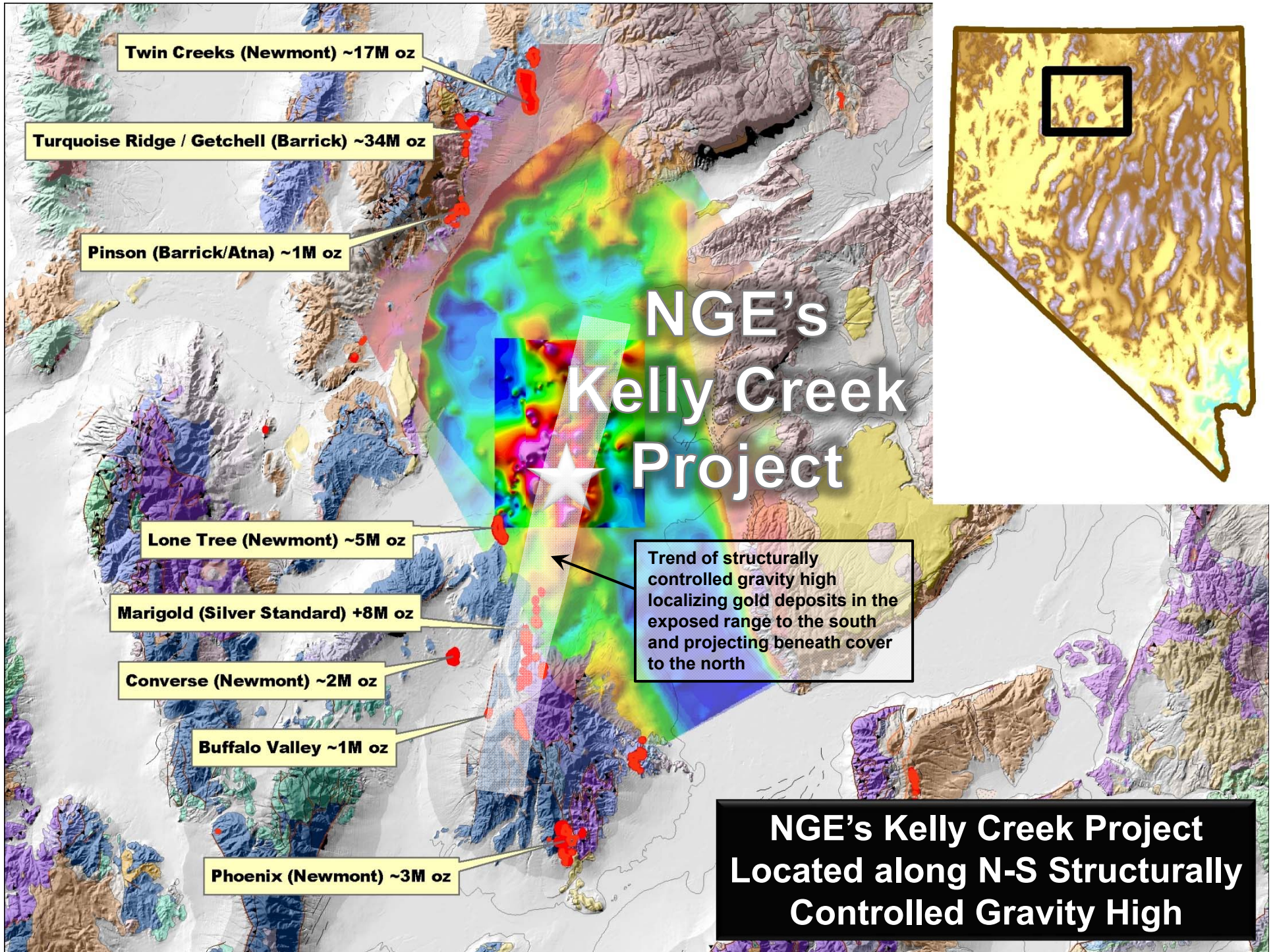
Inclusion of the adjacent properties herein is meant to demonstrate some parameters for the type of mineral deposit that the Company may encounter while conducting exploration on its properties. The Company cannot state, and it should not be implied, that the results of exploration and development activities on the adjacent properties will be similar on its properties or that similar mineralization will be discovered on its properties. All investors are cautioned that mineral deposits on adjacent properties are not proof of mineral deposits on the Company's properties. A mineral deposit has not yet been discovered on any of the Company's properties. If any of the information on the adjacent properties herein contains a misrepresentation, an investor does not have a remedy under applicable securities legislation.

CAUTIONARY NOTE REGARDING FORWARD-LOOKING INFORMATION

This presentation contains forward-looking statements concerning the Company. More particularly, it contains forward-looking statements concerning planned capital expenditures, planned exploration and development activities, the timing of potential exploration and development opportunities associated with the Company's properties. The forward-looking statements are based on certain key expectations and assumptions made by the Company, including expectations and assumptions concerning the success of future exploration and development activities, the geological characteristics of the Company's properties, commodity prices and exchange rates, the application of regulatory and licensing requirements and the availability of capital, labour and services. Although the Company believes that the expectations and assumptions on which the forward-looking statements are based are reasonable, undue reliance should not be placed on the forward-looking statements because the Company can give no assurance that they will prove to be correct.

The Company undertakes no obligation to update publicly or revise any forward-looking statements or information, whether as a result of new information, future events or otherwise, unless so required by applicable securities laws.

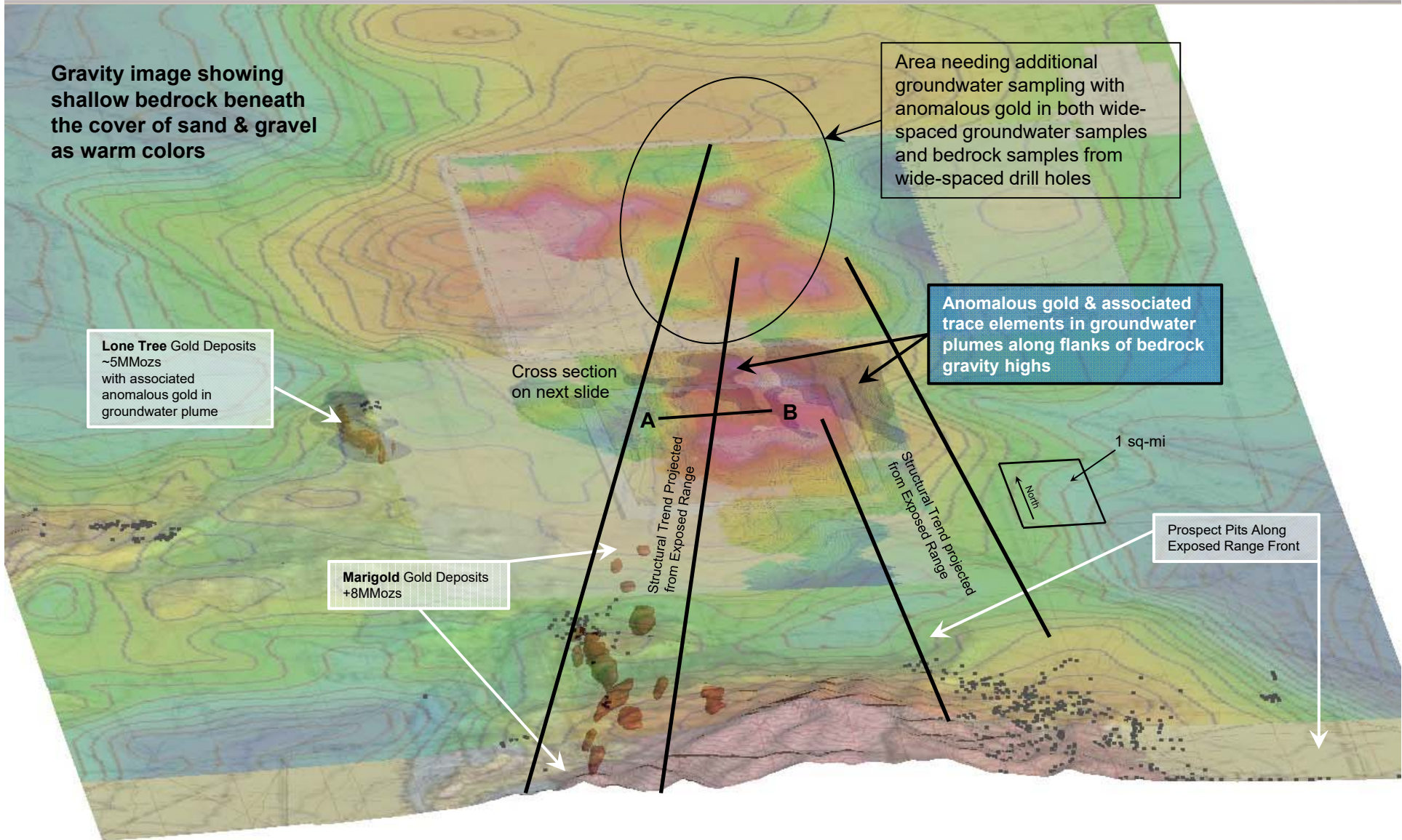




NGE'S Kelly Creek Geologic Model

Built on Unparalleled Exploration Database

- 1,000 km² (390 mi²) regional magnetic geophysical survey data;
- 670 km² (260 mi²) detailed air magnetic geophysical survey data;
- 1,000 km² (390 mi²) regional gravity geophysical survey data;
- 100 km² (40 mi²) detailed gravity geophysical survey data;
- 33 line-km (21 line-mi) of CSAMT geophysical survey data;
- 49 line-km (30 line-mi) 3D reflection seismic survey lines; and
- Drilling database containing 31 drill holes from NGE and its exploration partners, plus 114 historic drill holes, representing more than 29,000 metres (95,000 feet) of drilling, including assay results for more than 5,000 drill intervals representing more than 10,000 metres (32,000 feet) of drill assay data.

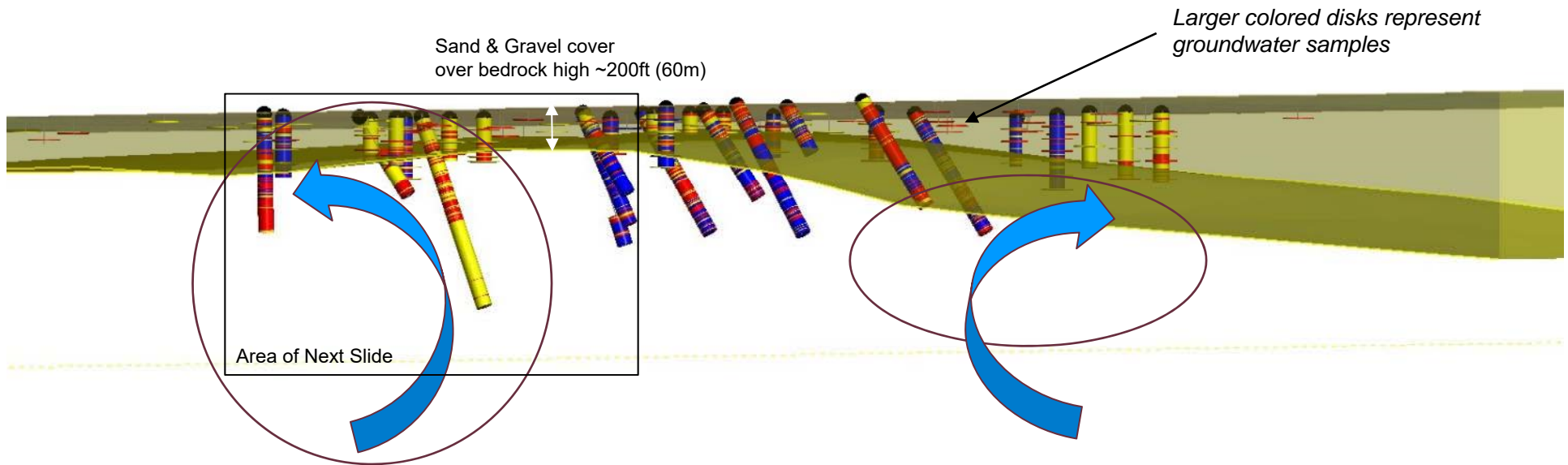


Geochemically Anomalous Groundwater & Drill Samples

	H2OAu_ppt	RkAu_ppm
(20 to 5,000 ppt)	High	High (10 to 300ppb)
(-2 ppt)	Low	Low (-5 ppb)
(2 to 20 ppt)	Mid	Mid (1 to 10ppb)

A

B



Anomalous groundwater chemistry above bedrock areas associated with low level rock geochemistry located peripheral to poorly explored major high-angle zones of hydrothermal alteration and brecciation as seen in core (next slide).

Anomalous Groundwater

Length of blue bars proportional to concentration of gold in groundwater from drill holes

